



DURACLAY LINTEL – THE STRENGTH BEHIND SUPPORTING YOUR BUILDING LOADS

Duraclay Lintel is specifically designed for use with Brikmakers' Claybrick range. It can span opening sizes up to 2410mm with minimal deflection at specified design loads.

The use of Brikmakers reinforced composite lintel should reduce your construction and maintenance costs. It will allow for improved key to plastering, giving a fantastic detail plaster finish to under window head.

STANDARD CONSTRUCTION & PLACEMENT DETAIL

Allow for a bearing of at least 230mm

Bed the lintel on a mortar joint

Ensure the clay face of the lintel faces into the room as this will allow a better plastering key.

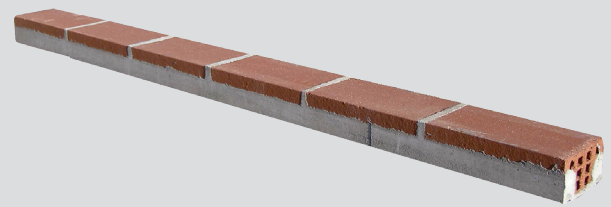
Ensure the window doesn't take the weight of the lintel. Up to 5mm clearance above the window head is recommended.

Ensure the window head ties are bedded into the bed joint above the lintel.

All testing is carried out in accordance with Australian /New Zealand Standards AS/NZS 4456 test methods where applicable.

This technical information represents average properties obtained from production lots. If specific test results are required, samples should be taken from current production lots.

Information subject to change without notice. Please confirm any technical requirement with your Brikmakers Rep.



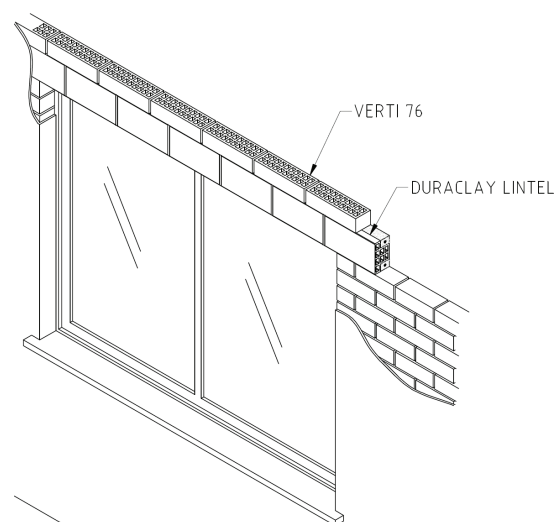
DURACLAY LINTEL

STANDARD LINTEL LENGTHS

NUMBER OF BRICKS	LINTEL LENGTH (mm)	LINTEL APPROX. WEIGHT (kg)
3	940	27
4	1250	35
5	1570	45
6	1890	53
7	2200	62
8	2500	72
9	2830	81
10	3140	89

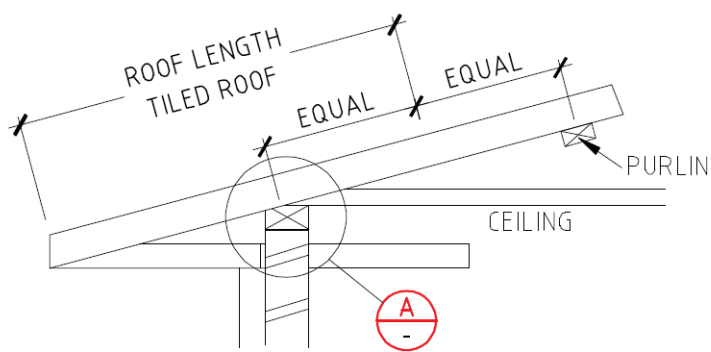
RESIDENTIAL DESIGN ROOF SPANS

LINTEL CLEAR SPAN (mm)	DEFLECTION LIMIT ROOF SPAN (m)
1100	23.40
1410	16.10
1730	10.51
2035	4.97
2340	4.27

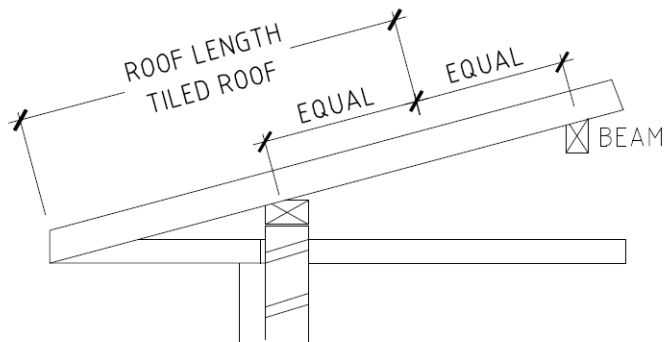


DURACLAY LINTEL

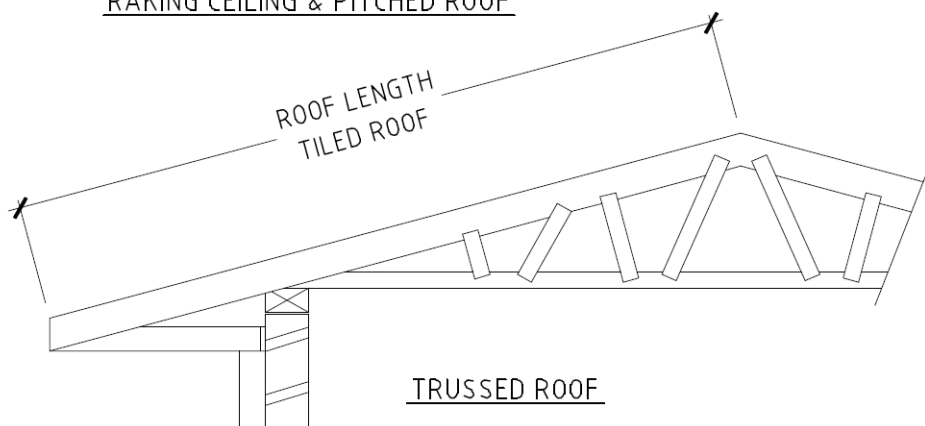
TYPICAL ROOF CONFIGURATIONS



STANDARD CEILING & PITCHED ROOF



RAKING CEILING & PITCHED ROOF



TRUSSED ROOF

DETAIL A

