

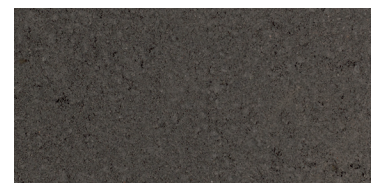
Permeable Pavers - PermaDrain

Technical Information	PERMA DRAIN	PERMA DRAIN PERMEABLE
Length x Width x Height (mm)	220 x 110 x 60	220 x 110 x 60
Pack dimensions (mm)	660 x 880 x 900	660 x 880 x 900
Dimensional category	DPBI	DPBI
No per pack	336	336
Approximate number per m ² (including joint)	40	40
Approximate m ² coverage per pack	8.4	8.4
Approximate unit weight (kg)	2.6	2.7
Approximate pack weight (kg)	875	910
Unconfined compressive strength (MPa)	> 15	> 15
Characteristic breaking load (kN)	> 5	> 5
24 hour cold water absorption (%)	< 9	< 9
Impact abrasion resistance (cm ³)	< 10	< 10
Slip/skid resistance (BPN)	65	65
Slip resistance category	W	W
Salt attack resistance category	Exposure	Exposure
Liability to efflorescence	Nil to Slight	Nil to Slight
Infiltration rate approximation (L/min/m ²)	2.5	5

Advantages of Brikmakers Permeable Pavers:

- Reduction of runoff from rain storms.
- Reduction of retention requirements in other parts of the drainage system.
- Filtration through the base and soil for improvement of water quality.
- Slows the release of runoff.
- Increase recharge of ground water.
- Reduction of downstream flows and bank erosion due to decrease peak flows and volumes.
- Possible reduction in overall project development costs due to a reduction in storm sewers and drainage.
- Very low maintenance requirements.
- Replace unsightly tree grates. Permeable Pavers allow you to pave right up to the tree base.

Other colours available made to order. Minimum quantities apply.







CHARCOAL



CHARCOAL PERMEABLE

Suitable For:

 <p>Any outdoor entertainment area including alfrescos and patios.</p>	 <p>Light traffic. Recommended for driveways.</p>	 <p>Light commercial or unit developments.</p>	 <p>Heavy traffic including trucks. Recommended for any commercial project.</p>
---	--	---	---



BLOKPAVE

Concrete Pavers

Permeable Pavers - PermaDrain

All Brikmakers' specifications testing is carried out in accordance with Australian/New Zealand Standards AS/NZS 4456 test methods where applicable.

This technical information represents average properties obtained from production lots. If specific test results are required, samples should be taken from current production lots. Durability classification is based on product knowledge under Perth, Western Australia climatic conditions.

To ensure the performance of the pavement and in particular trafficable pavements, it is recommended that square paving units are laid in staggered bond or a 45° staggered bond laying pattern. Rectangular and interlocking paving units should be laid in a herringbone pattern. Please refer to our information on expansion joints when installing large format paving units. It is also important to include 10mm control joints in these pavements.

Sizes and number per square metre or tonne are nominal only and subject to variance due to installation technique, raw material and allowable size variations exhibited by the product.

The physical properties of the Permeable Pavers are indicative and variations in pavement performance will occur depending on unit size and laying pattern. Infiltration rate will vary depending on age of pavement and maintenance schedule of the pavement.

Information is subject to change without notice. All colours are indicative only.

Please confirm all technical, colour and installation specifications are applicable to your application.
